

#### REMARK:

##### PRESTRESSING STEEL:

- SIGMA, 4 x Ø10 mm, L=1848 mm  
(St 1325/1470, round, ribbed)

or alternative:

- NEDRI, 4 x Ø9.5 mm, L=1848 mm  
(St 1375/1570, profiled)

##### INITIAL PRESTRESSING FORCE:

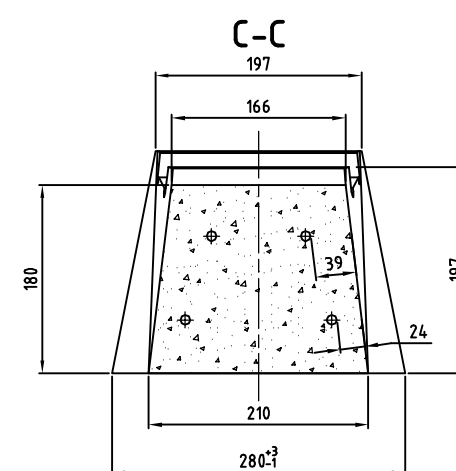
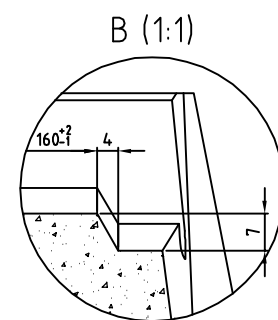
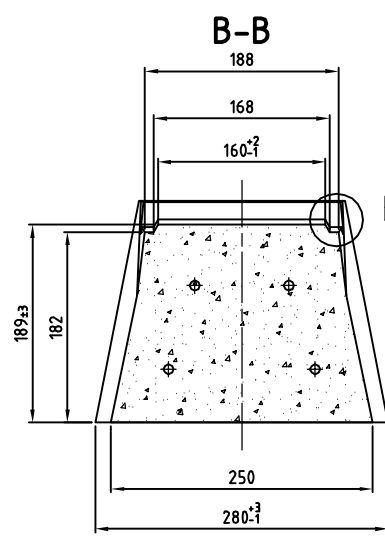
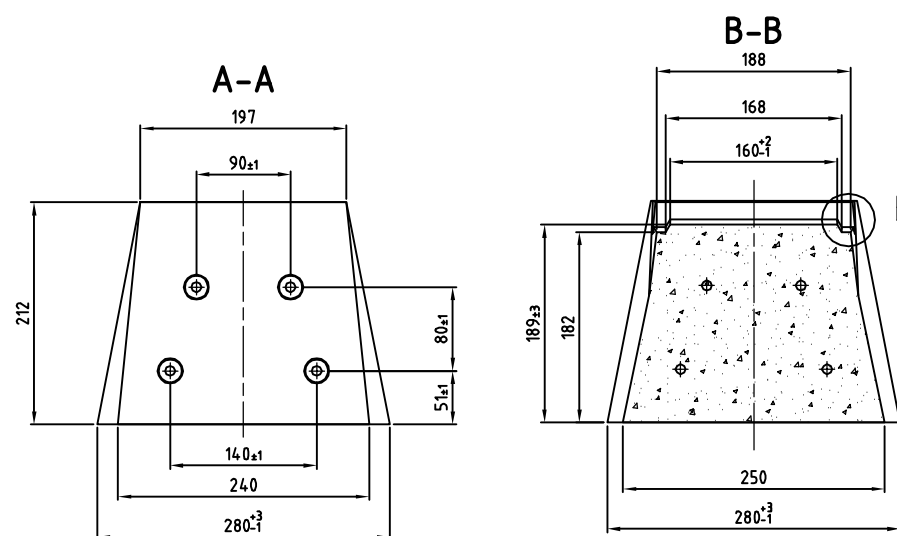
$V_0 = 325 \frac{P}{S}$  kN/SLEEPER


CONCRETE QUALITY: C50/60

CONCRETE VOLUME: approx. 77 l

CONCRETE WEIGHT: approx. 190 kg  
(including reinforcement)

TOTAL WEIGHT: approx. 200 kg  
(including railfastening)



<div>This drawing with all associated supplements and calculations is our intellectual property. It may not be accessed to third parties without our explicit consent. Neither be multiplied, published, or used for any other than the agreed upon purpose.</div>		Leonhard Moll Betonwerke GmbH & Co KG Lindwurmstraße 129 D-80337 München Fon: + 49-89-74 11 48-50		Untoleranced dimensions ISO 2768-m		Surface		Scale 1:5		Position Amount	
								Gauge 1000 mm		ΕΥΡΟΣ: 1000 mm	
						Date	Name	ΟΛΟΣΩΜΟΣ ΠΡΟΕΝΤΕΤΑΜΕΝΟΣ ΣΤΡΩΣΗΡΑΣ  Prestressed Monoblock Concrete Sleeper			
						plotted 2.3.2005	Bergmann				
						audited 2.3.2005	Gaffwinkel	MCS 1900-W31.57-1000-GR			
											Draft DIN A2